



Flat 9, Kerria Court Vervain Close, Churchdown, GL3 1LT

£800 Per Calendar Month

TO LET

CHOSEN
ESTATE AGENTS

- AVAILABLE NOW
- NEW CARPETS
- INTEGRATED WASHING MACHINE
- ALLOCATED PARKING
- EPC C
- TOP FLOOR APARTMENT
- NEW MAGNET KITCHEN
- FRIDGE FREEZER
- BUILT IN WARDROBE
- COUNCIL TAX BAND A

THE PROPERTY

Chosen Estate Agents are delighted to bring you this beautifully presented TOP FLOOR one double bedroom apartment in the desirable Churchdown area. Kerria Court is situated in Vervain Close just off Innsworth Lane in Churchdown all but equidistant to Cheltenham and Gloucester alike.

This apartment has undergone a refurbishment to include brand new grey carpets throughout, Brand New Magnet Kitchen to include appliances and been newly painted. The apartment offers lounge, one double bedroom with built in double wardrobe, kitchen with fridge freezer, integrated washing machine, new oven and hob included, bathroom with electric shower and allocated off road parking for up to 1 vehicle. The apartment also benefits from double-glazing and is warmed by electric heating. Sorry no smokers. No Pets. Available now

Holding Deposit: £190.00 based on 1 weeks' rent of asking price

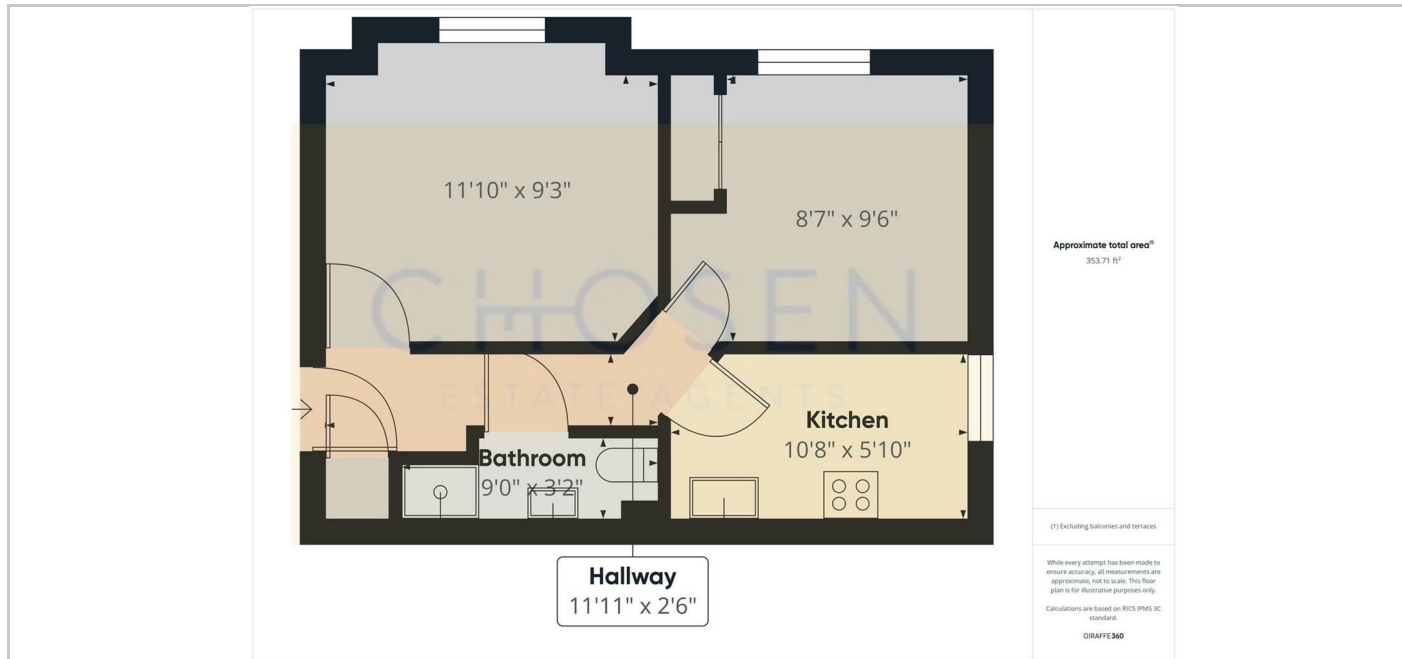
Security Deposit: £951.00 based on 5 weeks' rent of asking price

Council Tax band: A Local Authority: Tewkesbury Borough

EPC Band: C

Electricity supply: Mains Gas Supply: No Gas Water supply: Mains Sewerage: Mains Heating: Electric Heating Mobile phone coverage: i.e EE, Vodafone, Three, O2

If satisfactory references are not obtained or you withdraw your application any financial loss to Chosen Estate Agents or the Landlord will be deducted from your holding deposit. If you or your guarantor provides information that is inaccurate, false, incomplete, or adverse credit not being disclosed then we may retain your holding deposit and reject your application.



SITUATION

Directions

2 Church Road, Churchdown, Gloucestershire, GL3 2ER

Tel: 01452 857421 Email: info@chosenestateagents.co.uk www.chosenestateagents.co.uk